

TIGER AUDIO

By CLEIDIMAR, TIGER AUDIO
GOIANIA GOIAS



Box Properties

--Description--

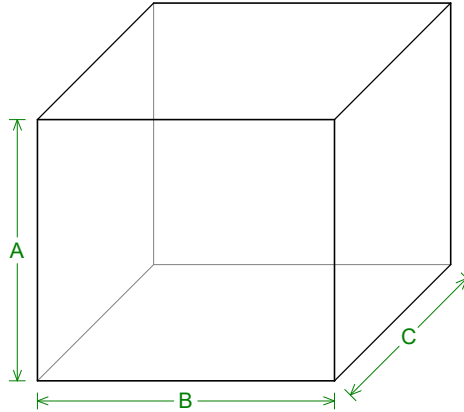
Name: CAQIXA 12 500W
Type: Vented Box
Shape: Prism, square
Company: TIGER AUDIO
Comment: CLEIDIMAR FERREIRA

--Box Parameters--

Vb = 30, liters
V(total) = 34,05 liters
Fb = 41,11 Hz
QL = 7,
F3 = 37,34 Hz
Fill = minimal

--Vents--

No. of Vents = 1
Vent shape = round
Vent ends = one flush
Dv = 77, mm
Lv = 210, mm



--External Dimensions--

A = 366, mm
B = 416, mm
C = 307,5 mm

--Internal Dimensions--

A = 330, mm
B = 380, mm
C = 271,5 mm

--Wall Thickness--

Front = 18, mm
Side = 18, mm

Driver Properties

--Description--

Name: TIGER 12 " 500W
Type: Standard one-way driver
Company: TIGER AUDIO
Comment: CLEIDIMAR FERREIRA
Piston: CELULOSE VACUO
Suspension: SILICONE / POLIURETANO
Dust Cap: ABS
Frame: ALUMINIO
Voice Coil: FIBER GLASS CCAW
Terminals: BORNE PRESSAO
Magnet: MONO BLOCO 135X35

--Configuration--

No. of Drivers = 1

--Mechanical Parameters--

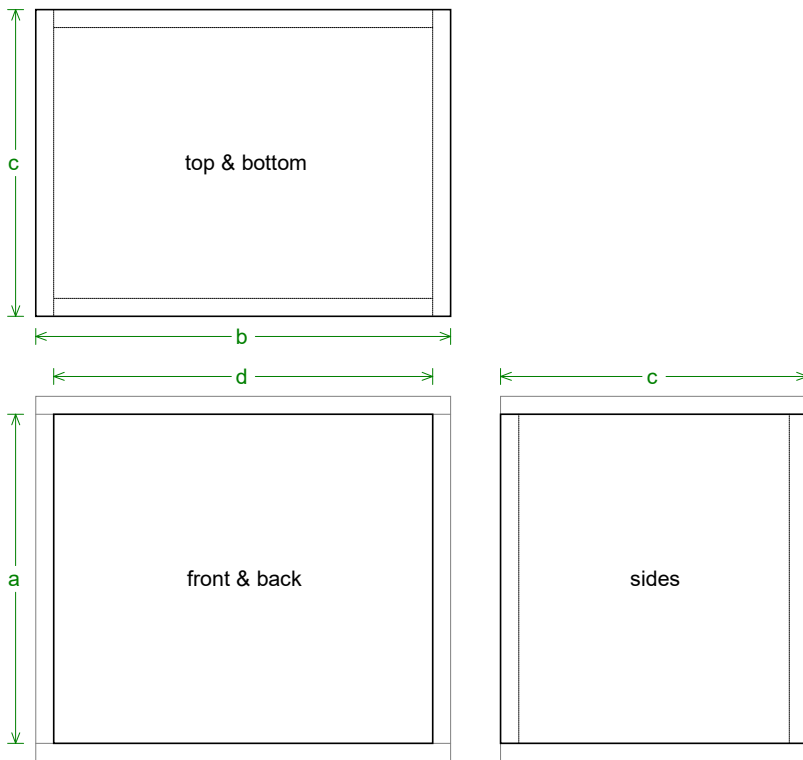
Fs = 39, Hz
Qms = 10,14
Vas = 30, liters
Cms = 0,081 mm/N
Mms = 195, g
Rms = 4,969 kg/s
Xmax = 11, mm
Xmech = 16,5 mm
P-Dia = 255, mm
Sd = 0,0511 sq.m
P-Vd = 0,562 liters

--Electrical Parameters--

Qes = 1,374
Re = 3,9 ohms
Le = 1,199 mH
Z = 4, ohms
BL = 12,04 Tm
Pe = 500, watts

--Electromech. Parameters--

Qts = 1,21
no = 0,125 %
1-W SPL = 83,11 dB
2.83-V SPL = 86,24 dB



Box Parts

Box Shape: Square Prism

1 Top, 1 Bottom: depth (*c*) = 307,5 mm
width (*b*) = 416,, thickness = 18, mm

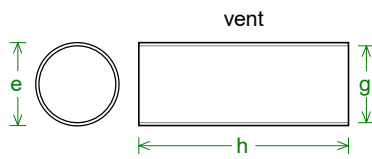
1 Front, 1 Back: height (*a*) = 330, mm
width (*d*) = 380,, thickness = 18, mm

2 Sides: height (*a*) = 330, mm
depth (*c*) = 307,5, thickness = 18, mm

--Driver Mounting--
Mounting: Flush

--Vent Parts--

1 Duct: outside diameter (*e*) = 83,35 mm
inside diameter (*g*) = 77, mm
length (*h*) = 210, mm



fractions

1/16	1/8	3/16	1/4	5/16	3/8	7/16	1/2	9/16	5/8	11/16	3/4	13/16	7/8	15/16
0,0625	0,1250	0,1875	0,2500	0,3125	0,3750	0,4375	0,5000	0,5625	0,6250	0,6875	0,7500	0,8125	0,8750	0,9375

decimal equivalents

